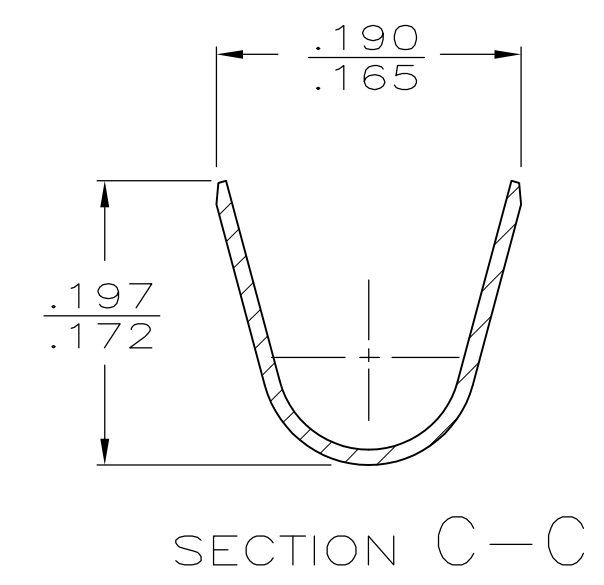
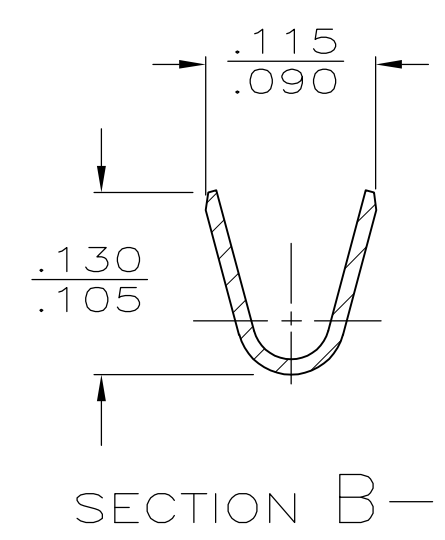
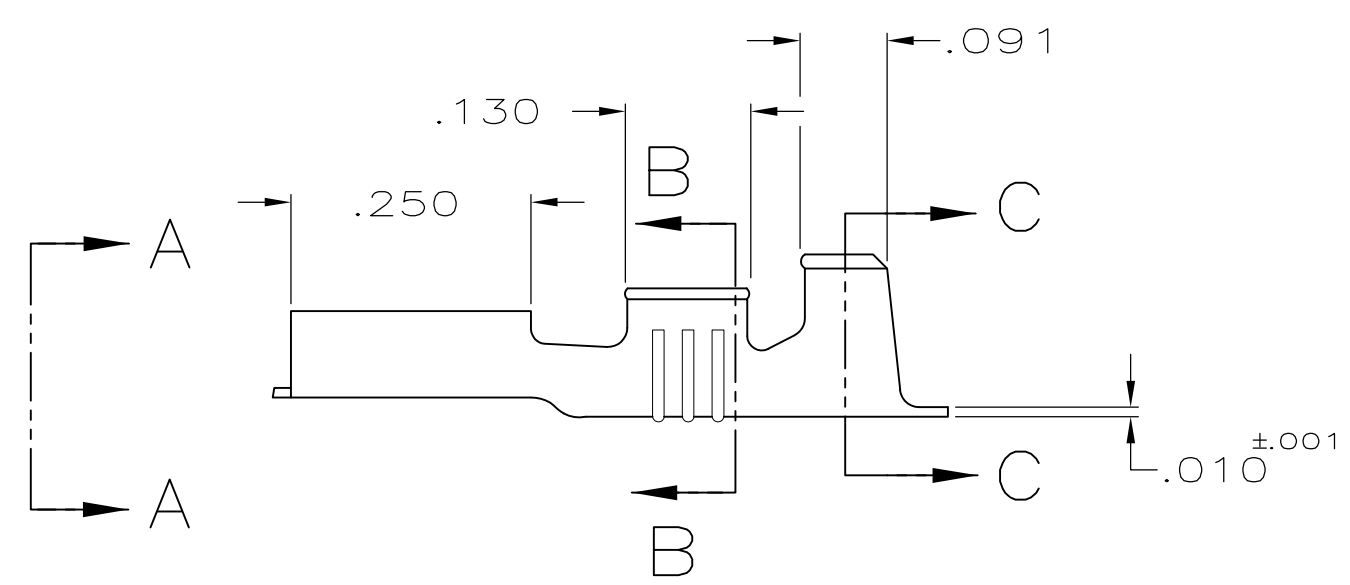
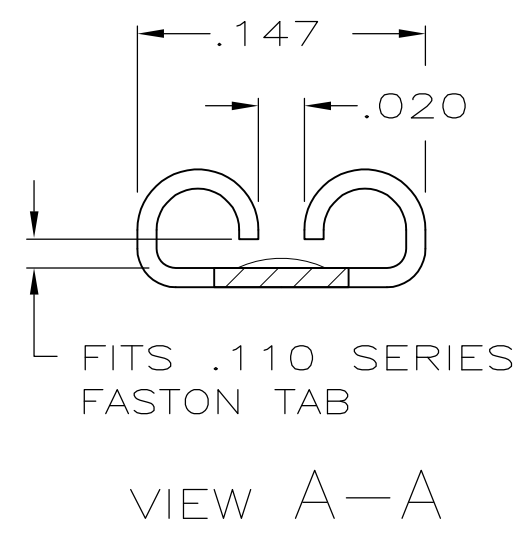
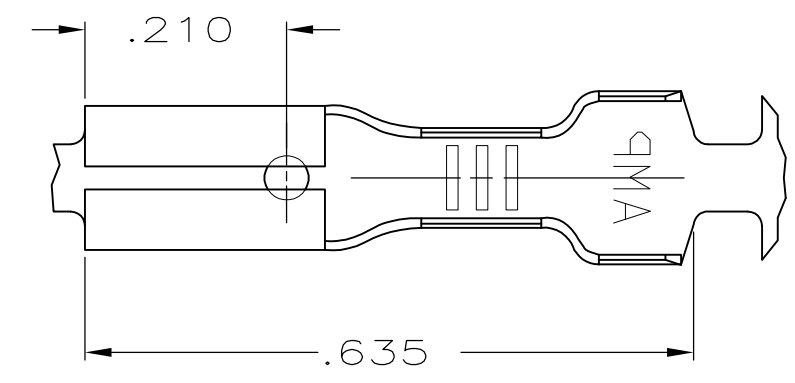


THIS DRAWING IS UNPUBLISHED. RELEASED FOR PUBLICATION
 © COPYRIGHT - By - ALL RIGHTS RESERVED.

LOC	DIST	REVISIONS			
P	LTR	DESCRIPTION	DATE	DWN	APVD
AF	50	E	REVISED PER ECR-12-013459	28NOV2012	KH PD

- CONTINUOUS STRIP ON REELS.
- MATING TAB THK TO BE $.032 \pm .001$.
- WIRE SIZE IS #20-#16 AWG.
- INSULATION RANGE TO BE $.120-.140$ DIA.



.000150 MIN NICKEL	082 STEEL	62050-2
PRE-TIN	BRASS	62050-1
FINISH	MATERIAL	PART NO

TYPE	WIDTH	STRIP LENGTH	TYPE	WIDTH	±.002 HEIGHT	WIRE
F	.155	.188	F	.070	.060	16
					.051	18
					.045	20
INSUL BARREL CRIMP		±.015	WIRE BARREL CRIMP			

THIS DRAWING IS A CONTROLLED DOCUMENT.

DIMENSIONS: INCHES

TOLERANCES UNLESS OTHERWISE SPECIFIED:

0 PLC	± -
1 PLC	± -
2 PLC	± -
3 PLC	± .015
4 PLC ANGLES	± -

MATERIAL: SEE TABLE

FINISH: SEE TABLE

DWN: JR RUTH 5/15/89

CHK: M FEHER 5/15/89

APVD: C MEYERS 5/15/89

PRODUCT SPEC: -

APPLICATION SPEC: 114-2036

WEIGHT: -

CUSTOMER DRAWING

STE TE Connectivity

RECEPTACLE, FASTON,™
.110 SERIES

SIZE	CAGE CODE	DRAWING NO	RESTRICTED TO
A3	00779	C-62050	-

SCALE: NTS SHEET: 1 OF 1 REV: E